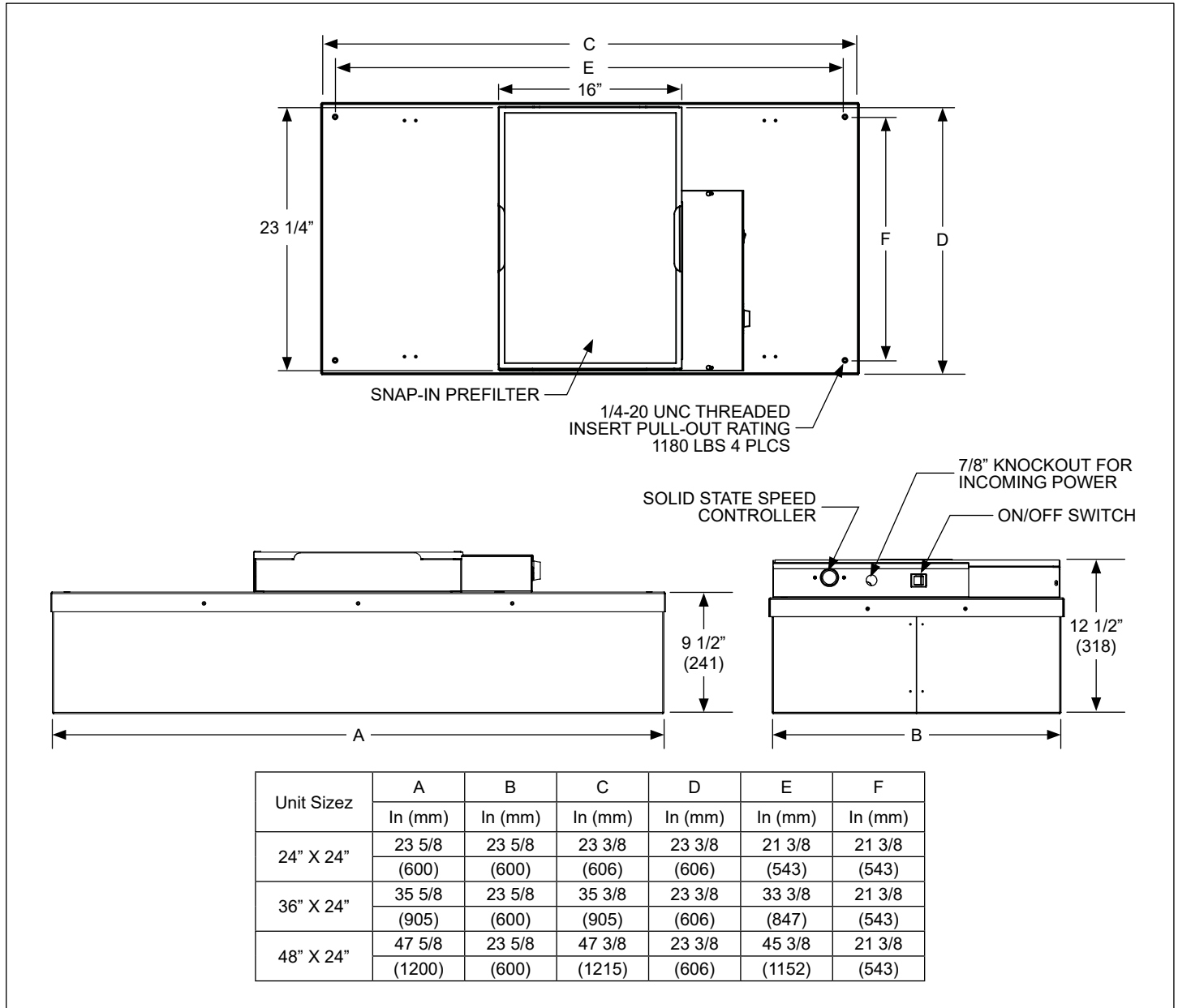


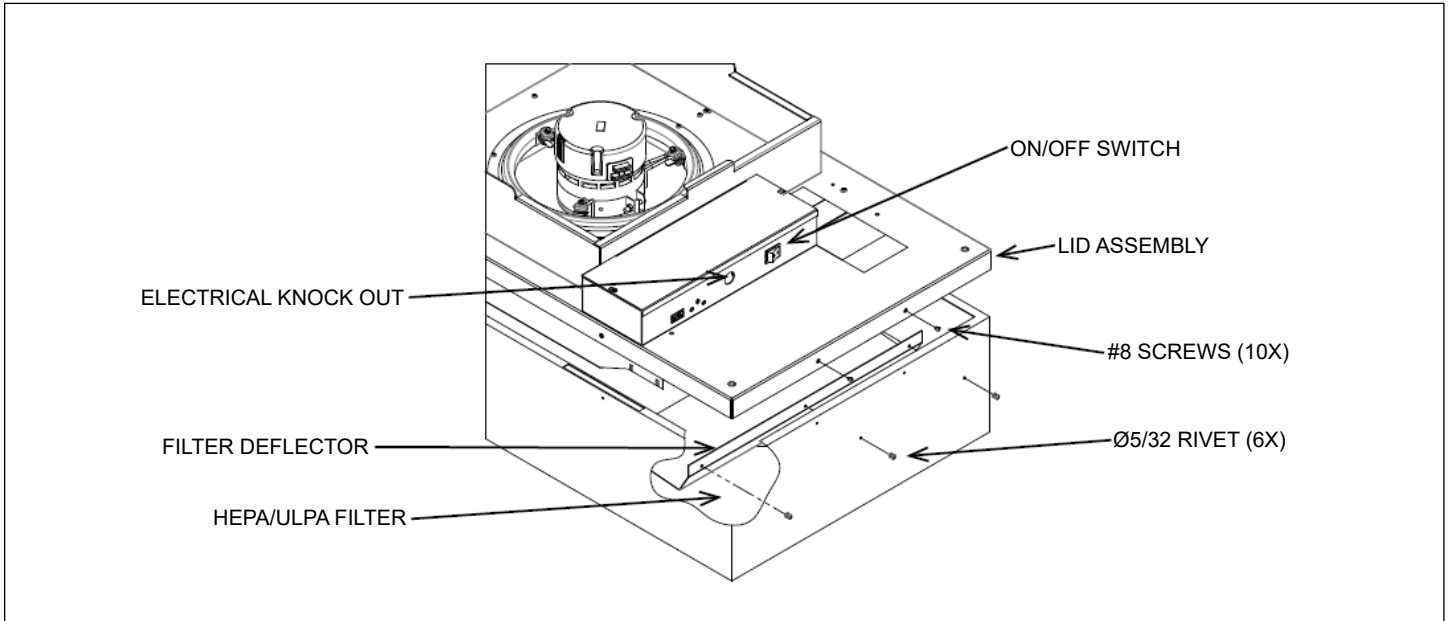
**FFD** • Fan Filter Diffusers • PSC Motor



## General Description

- Titus Fan Filter Diffusers provide constant unidirectional airflow to occupied space
- FFD offers high performance, low energy consumption & low noise levels for use in cleanroom applications
- Low profile design is great for applications with limited ceiling plenum space
- Walkable plenum (excluding pre-filter), rated at 250 lbs
- PSC motor with solid state speed control
- Forward curved centrifugal fan
- Snap-in prefilter allows for easy replacement and maintenance
- Tested to IEST recommended standards
- UL 507 Listed with standard UL 900 filters

## HEPA filter, Pre-filter &amp; Lid assembly

**Basic Unit Configuration**Check ☒ if provided.**Module Size**

- ☐ 24" x 24"
- ☐ 36" x 24"
- ☐ 48" x 24"

**Motor Type**

- ☐ 115V/ 60 Hz/ 1 Phase ; FLA = 3.0A
- ☐ 208-240V/ 50/60 Hz/ 1 Phase ; FLA = 1.5A
- ☐ 277V/ 60 Hz/ 1 Phase ; FLA = 1.2A

**Duct Collar**

- ☐ None
- ☐ 10" Inlet (Shipped Loose)
- ☐ 12" Inlet (Shipped Loose)

**Control Type**

- ☐ Unit Mounted SCR Control
- 3 Speed Switch for STD 2x4,  
SSSC - Variable Speed Switch

**Unit Construction**

- ☐ Aluminum Face & Plenum
- ☐ Stainless Steel Face / Aluminum Plenum
- ☐ Stainless Steel Face & Plenum

**Filter Type**

- ☐ HEPA (99.99%@0.3 micron)
- ☐ ULPA (99.9995%@0.12 micron)

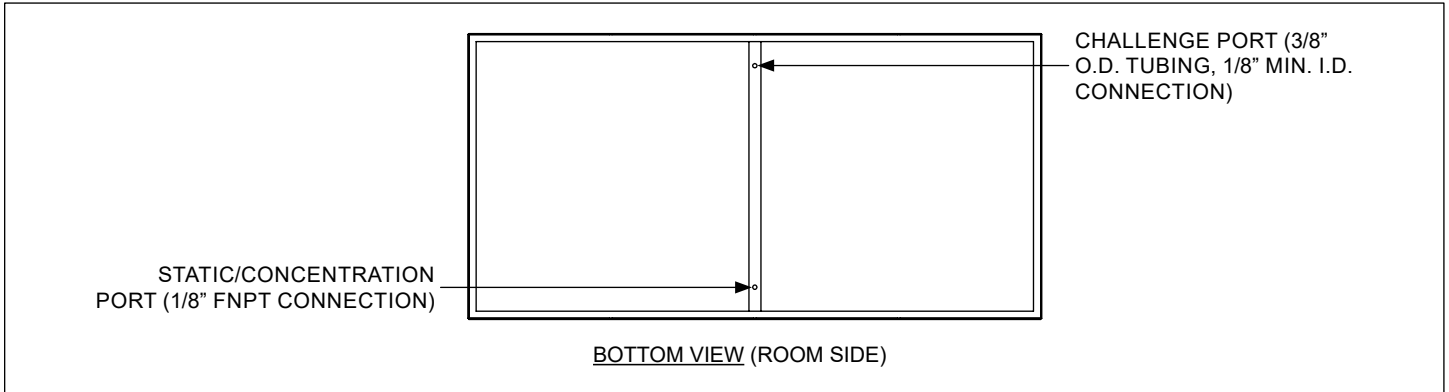
**Finish**

- ☐ #04 Mill Finish
- ☐ #26 White

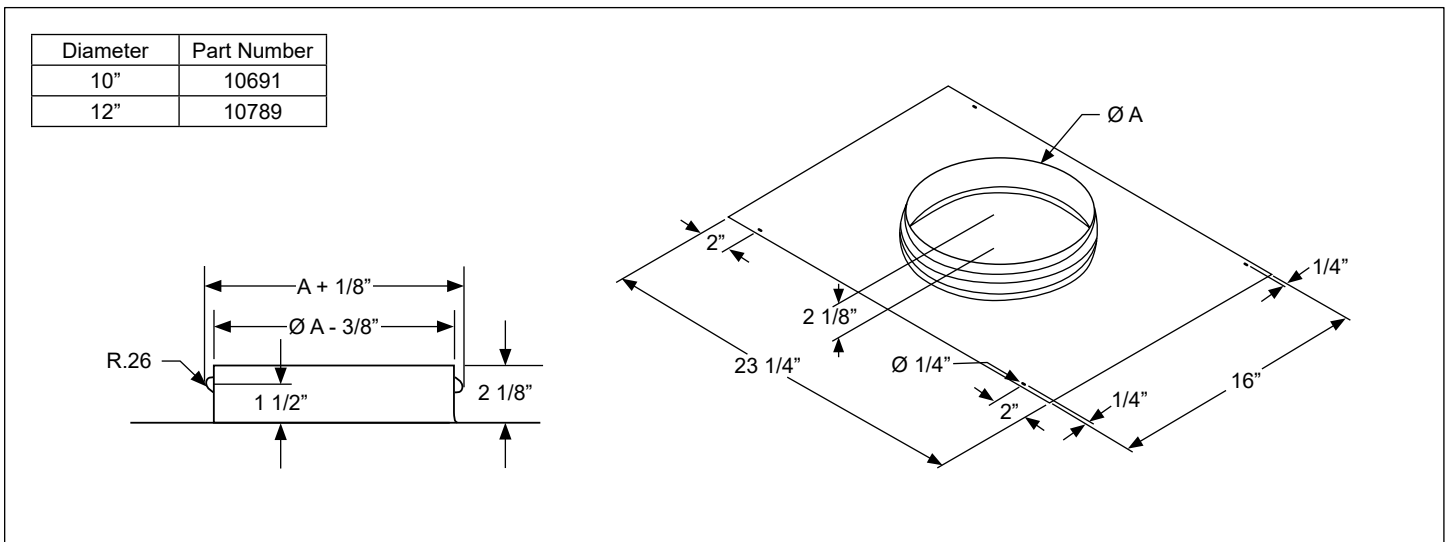
**Accessories (Optional)**Check ☒ if provided.

- ☐ Aerosol Challenge Port
- ☐ Surface Mount Adapter
- ☐ Insulation
- ☐ Continuous Filter Monitoring (0-10 V signal)

## Challenge/Concentration Port Detail



## Inlet Adapter Accessory Detail



## Surface Mount Adapter Accessory Detail

